

Mill Size Baler

The mill size baler is one of SEW most popular vertical down stroke balers, producing bales of many kinds of material. Suitable bale size and weight save you money, time, space, and maximize the use of transport as the waste volume can be reduced up to 92%. Mill sized bale weight ranges from 300 kg to 500kg and the optimal bale size for a 40' HQ container is 1200 x 800 x 1000mm.

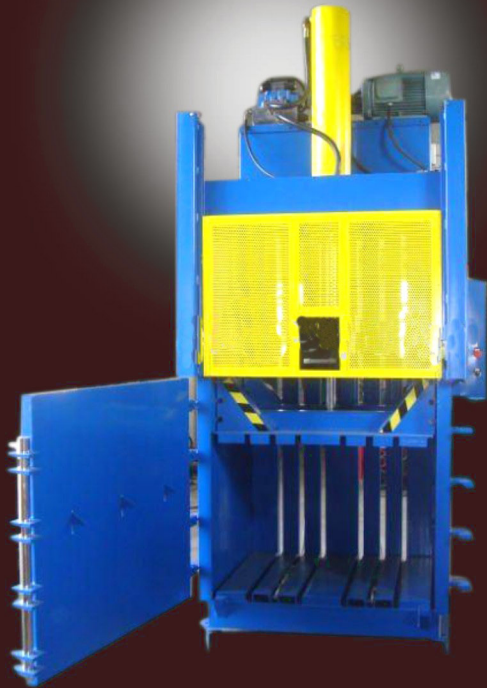
Mask is always looking into innovation. This mil size baler has several unique operating features, making the most efficient and versatile baler in the market place today. Further more. the robust design and market leading build quality ensure many years of reliable operation.

Baling Application : Cartons, film, corrugated cardboard (OCC), ONP, OMG, Office waters and other packaging material.

Choose from our various models below, or contact us for a customized baling solution.

FEATURES

- Chain Bale Ejector**
for easy and efficient bale ejecting with the lifting up of the chain
- Sliding Door**
for convenient opening/closing and also reducing space occupation. When platen goes up, the door will be lifted up automatically, which promotes work efficiency and saves labour.
- Adjustable Bale Height**
for achieving various bale size and weight
- Electric Controlled**
for easy operation, simply by operating on buttons and switches to fullfill platen moving and bale ejecting
- Hydraulic Driven Chamber Door is Optional**
Enables door opening/closing only with an operation on a rotary switch, which promotes work efficiency and saves labor.



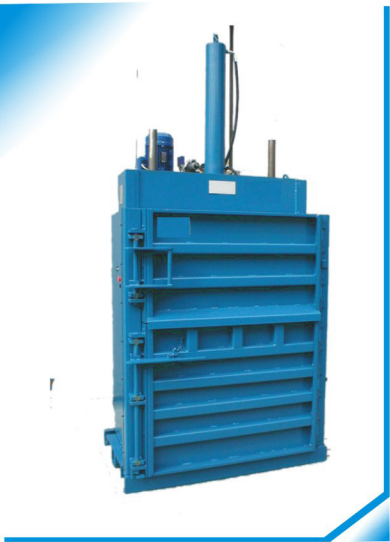
Specifications

MODEL		SEW 1070	SEW 1071			SEW 1072		
Compressing Force (max)		25 ton (55,000lbs)	30 Tons (66.00lbs)			HD (High Denstiy)	50ton (110,000lbs))	
Feed Opening	Length	900mm (36")	800mm (31")	1200mm (47")	1520mm (60")	1520mm (60")	900mm (36")	1200mm (47")
	Height	700mm (28")	500mm (20")	600mm (24")	680mm (27")	680mm (27")	700mm (28")	600mm (24")
Compressing Chamber Size	Length	900mm (36")	800mm (31")	1100mm (43")	1520mm (60")	1520mm (60")	900mm (36")	1100mm (43")
	Width	700mm (28")	600mm (24")	760mm (30")	760mm (30")	760mm (30")	700mm (28")	760mm (30")
	Height	1250mm (50")	1400mm (55")	1500mm (59")	2000mm (79")	2000mm (79")	1500mm (60")	1500mm (59")
Bale Size	Length	900mm (36")	800mm (31")	1100mm (43")	1520mm (60")	1520mm (60")	900mm (36")	1100mm (43")
	Width	700mm (28")	600mm (24")	760mm (30")	760mm (30")	760mm (30")	700mm (28")	760mm (30")
	Height	600mm (24")	800mm (31")	900mm (35")	1220mm (48")	1220mm (48")	600mm (24")	900mm (35")
Bale Weight (for OCC)		Up to 100kg	Up to 160kgs	Up to 260kgs	Up to 420kgs	Up to 480kgs	Up to 100-175kg	Up to 320kgs
		Up to 220lbs	Up to 352lbs	Up to 573lbs	Up to 925lbs	Up to 1,057lbs	Up to 220-385lbs	Up to 705lbs
Hydraulic Pressure (max)		20Mpa (2900psi)	16Mpa (2320psi)	20Mpa (2320psi)	16Mpa (2320psi)	20Mpa (2900psi)	20Mpa (2900psi)	20Mpa (2900psi)
Main Cylinder	Bore	150mm (6")	140mm (5.5")	140mm (5.5")	150mm (5.9")	150mm (5.9")	170mm (6.8")	160mm (6.3")
	Piston Rod	90mm (3.6")	100mm (3.9")	100mm (3.9")	110mm (4.3")	110mm (4.3")	105mm (4.2")	120mm (4.7")
	Stroke	1000mm (40")	900mm (35")	1000mm (39")	1200mm (47")	1200mm (47")	1200mm (48")	1000mm (39")
Oil Reservoir		100L (26.4gal)	100L (26.4gal)	100L (26.4gal)	100L (26.4gal)	100L (26.4gal)	150L (39.6gal)	140L (36.9gal)
Motor Power		4kw (5HP)	5.5kw (7.5Hp)	5.5kw (7.5Hp)	7.5kw (10HP)	7.5kw (10HP)	7.5kw (10HP)	11kw (15HP)
Number of Tying		3	4-6.	4-7.	5-7.	5-7.	3	4-6.
Cycle Time (unloaded)		30 second	36 seconds	46 seconds	45 seconds	47 seconds	30 second	45 seconds
Machine Weight (approx)		1700kg (3740lbs)	1200kg (2,640lbs)	1800kg (3,960lbs)	2300kg (5,050lbs)	2300kg (5,050lbs)	2200kg (4840lbs)	1900kg (4,180lbs)

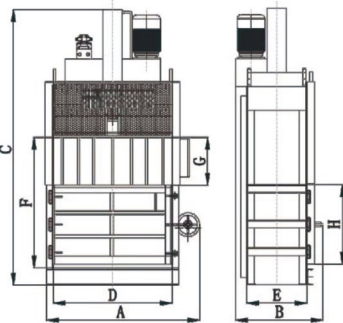
Overall specifications are subject to change without notice. SEW sales representative for your inquiry will give you the exact specifications for your quoted machine.

* Bale size hereby referred to does not consider bale expanding.

** Throughput rates are subject to your material's input density, feed speed, and other variables of production outside the control of SEW .



Dimensional Data



MODEL	SEW 1068				SEW 1069	
A	1200mm / 47"	1650mm / 65"	1950mm / 77"	1950mm / 77"	1700mm / 67"	1980mm / 78"
B	900mm / 35"	1140mm / 45"	1100mm / 43"	1100mm / 43"	1200mm / 47"	1150mm / 45"
C	3350mm / 132"	3620mm / 143"	3650mm / 144"	3650mm / 144"	3620mm / 143"	3650mm / 144"
D	800mm / 31"	1200mm / 47"	1520mm / 60"	1520mm / 60"	1200mm / 47"	1520mm / 60"
E	600mm / 24"	800mm / 31"	760mm / 30"	760mm / 30"	800mm / 31"	760mm / 30"
F	1400mm / 55"	1800mm / 71"	2000mm / 79"	2000mm / 79"	1800mm / 71"	2000mm / 79"
G	500mm / 20"	650mm / 26"	680mm / 27"	680mm / 27"	650mm / 26"	680mm / 27"
H	900mm / 35"	1150mm / 45"	1320mm / 52"	1320mm / 52"	1150mm / 45"	1320mm / 52"

www.shlokengineeringworks.com